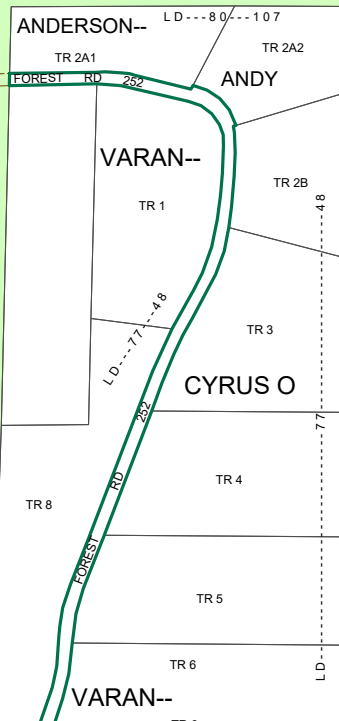
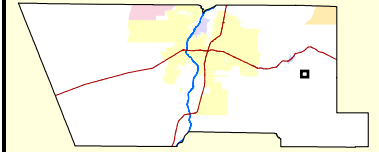


A-2

UNPLATTED/CIBOLA NATIONAL FOREST



A-2

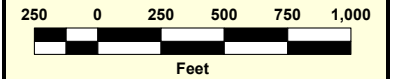


LEGAL DESCRIPTION

T10N  
R6E  
SEC 31

UNIFORM PROPERTY CODE

1-031-055



Map amended through Fall 2024



PLANNING & DEVELOPMENT SERVICES  
GIS TECHNOLOGY SECTION

This information is for reference only. Bernalillo County assumes no liability for errors associated with the use of these data. Users are solely responsible for confirming data accuracy when necessary. Source data from Bernalillo County and the City of Albuquerque. For current information visit <https://www.bermco.gov/planning/download-zone-atlas-.aspx>.

M-31-Z